

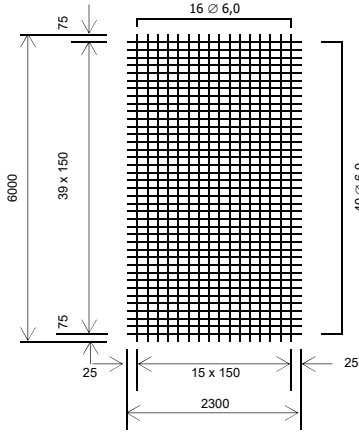
Artikelliste für Betonstahllagermatten

Q - Matten

R - Matten

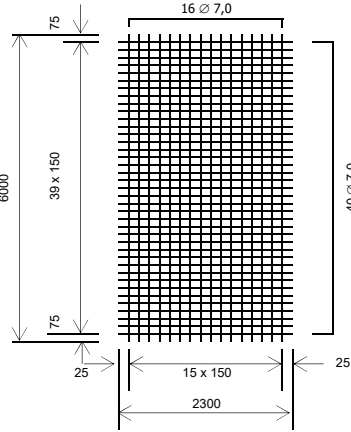
Q 188 A

Gewicht je Matte 41,7 kg
Gewicht je qm 3,02 kg



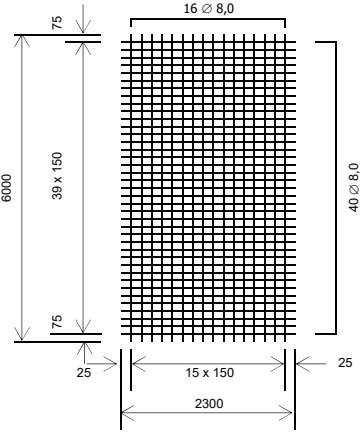
Q 257 A

Gewicht je Matte 56,8 kg
Gewicht je qm 4,12 kg



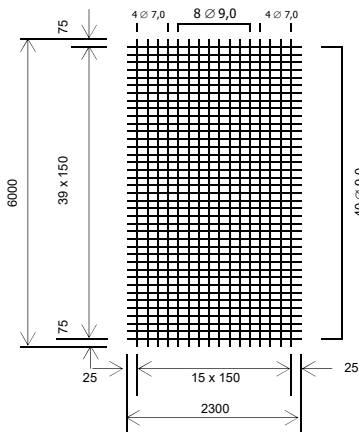
Q 335 A

Gewicht je Matte 74,3 kg
Gewicht je qm 5,38 kg



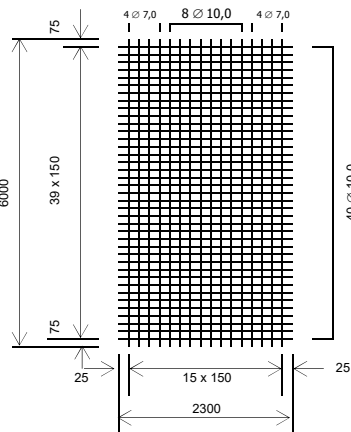
Q 424 A

Gewicht je Matte 84,4 kg
Gewicht je qm 6,12 kg



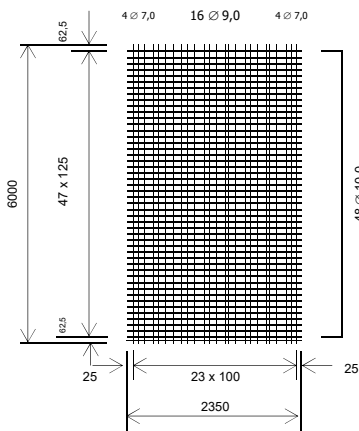
Q 524 A

Gewicht je Matte 100,9 kg
Gewicht je qm 7,31 kg



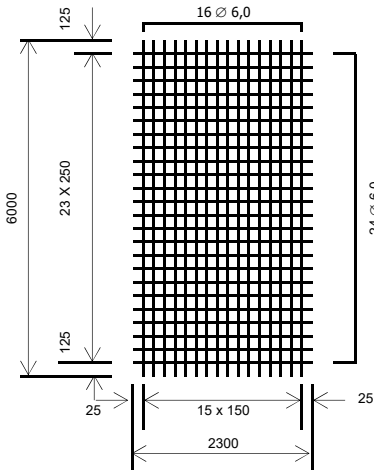
Q 636 A

Gewicht je Matte 132,0 kg
Gewicht je qm 9,36 kg



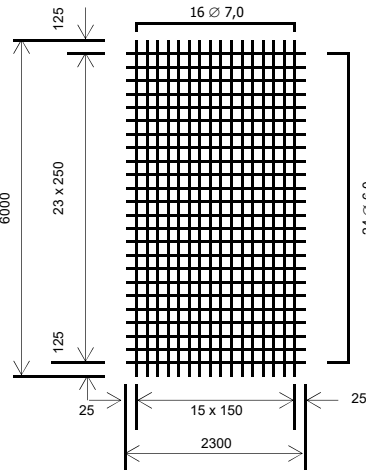
R 188 A

Gewicht je Matte 33,6 kg
Gewicht je qm 2,43 kg



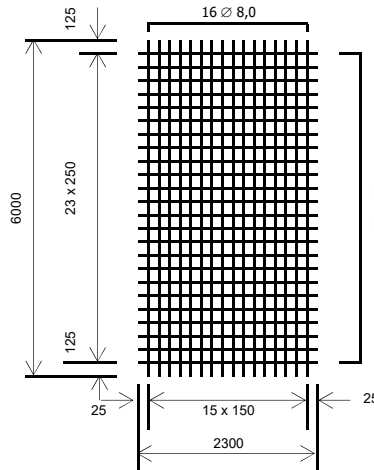
R 257 A

Gewicht je Matte 41,2 kg
Gewicht je qm 2,99 kg



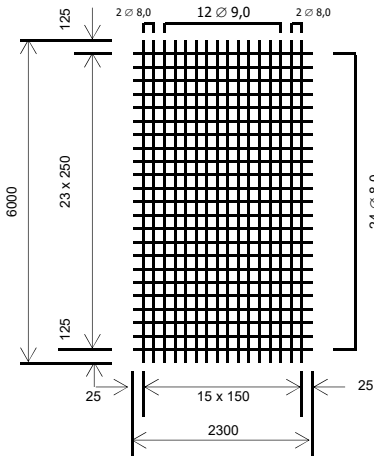
R 335 A

Gewicht je Matte 50,2 kg
Gewicht je qm 3,64 kg



R 424 A

Gewicht je Matte 67,2 kg
Gewicht je qm 4,87 kg



R 524 A

Gewicht je Matte 75,7 kg
Gewicht je qm 5,49 kg

